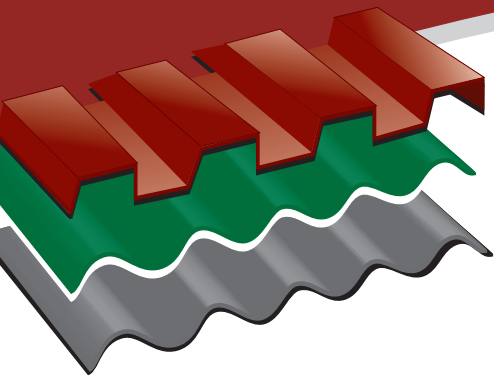


# SISSONS



## ROOFCOTE

Anti-corrosive Roof Paint

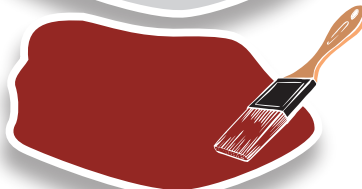
Middle Green



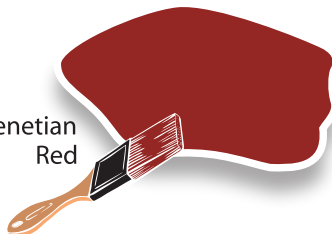
Aluminum



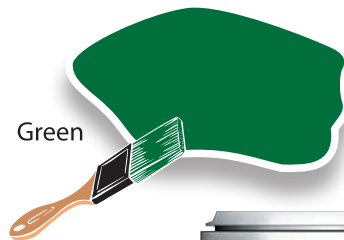
Venetian Red



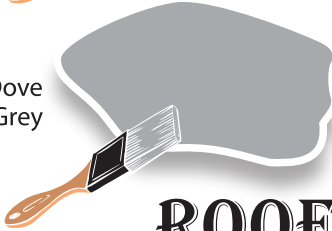
Venetian Red



Green



Dove Grey



Also available in White



## ROOFING COMPOUND

Special Bright Red



Green



Mid-Quaker Gray



Tile Red



## FLOOR PAINT

Colours shown may differ slightly from actual Sissons Paint colours due to differences in surface texture, light & ageing of colour card.

Uriah Butler Highway,  
Chaguanas, Trinidad WI.

☎ 868.665.5721/3 671.2722

Fax: 868.665.5996/1577

✉ sissons@tstt.net.tt

www.sissonspaints.com

Frequente Industrial Park,  
Grand Anse, St. George, Grenada WI.

☎ 473.444.1457/4157

Fax: 473.444.1676

✉ gsissons@caribsurf.com

**SISSONS**  
Paint

Good Looks That Last



An ISO Certified Company



# SISSONS

## Preparation & Application

Roofing Compound

*Although Sissons Roofing Compound is a revolutionary new product, the age old saying that the foundation of every good paint job begins with proper surface preparation still holds. Here are guidelines for preparation of various surfaces most commonly used.*

### SURFACE PREPARATION

#### NEW GALVANIZED SHEETS (NOT WEATHERED)

New galvanized sheets should be degreased by wiping with Sissons Paint Thinners in order to remove any petroleum type residue. Apply one (1) coat of Sissons Etch Primer to facilitate adhesion by nullifying the effect of the zinc scales. For best results Etch Primed Surfaces should be over-coated within 8hrs. The new galvanized sheets are now ready to accept our roofing compound. See section on application

#### NEW GALVANIZED SHEETS (WEATHERED)

New galvanized sheets that have been weathered for six months or more would not need solvent wiping or etching. Ensure the surface is clean by sweeping and washing. See section on application.

#### OLD GALVANIZED SHEETS PREVIOUSLY PAINTED AND UNPAINTED

Before any cleaning is commenced, ensure all nails are properly fastened, and repair or replace all damaged sheets. All rusted areas should be wire brushed and treated with Sissons Phosphating Solution. Scrape off all peeling and loosely adhering material. The entire roof should be swept and washed. See section on application.

#### NEW CONCRETE ROOFS

The concrete should be allowed to age for at least 16-20 weeks before application of any coating. The entire surface should be scrubbed and washed then allowed to dry properly. See section on application.

#### OLD CONCRETE ROOF (UNPAINTED)

Scrub and wash thoroughly to ensure there is no residual moss or dirt present. Before application, all holes, cracks, etc., should be repaired.

#### OLD CONCRETE ROOF (PREVIOUSLY PAINTED/COATED)

Ideally, these cases should be referred to our technical department. However, as a general rule, ensure the existing coat is in tact and all peeling and loosely adhering material has been removed. Also, ensure that the surface is clean and dry. All cracks, holes etc., should be repaired.

### APPLICATION

This product is supplied ready for use by soft, longhaired brushes, brooms, rollers or airless spray. This product should be properly stirred before using. For best results and proper film integration the product should be layered on, in an even coat in one direction, and the second coat applied at a right angle to the first. Of course this does not apply to corrugated galvanized sheets where all coats applied by brush or broom are in the same direction. Direction is not relevant to airless spray.

On all concrete roofs: the first coat should be reduced using up to 25% clean water, followed by a second, unthinned coat. Coats should be crossed lapped.

On galvanized roofs: after ensuring proper surface preparation two unreduced coats should be applied by use of soft longhaired brushes, brooms or airless spray. Generally the product is surface dry in 30mins. this varies however, depending on the thickness of the coat applied and prevailing atmospheric conditions. This product should not be applied in rainy weather or late afternoon, as it can be washed off if subjected to heavy rainfall within four hours of application, or from severe dew formation